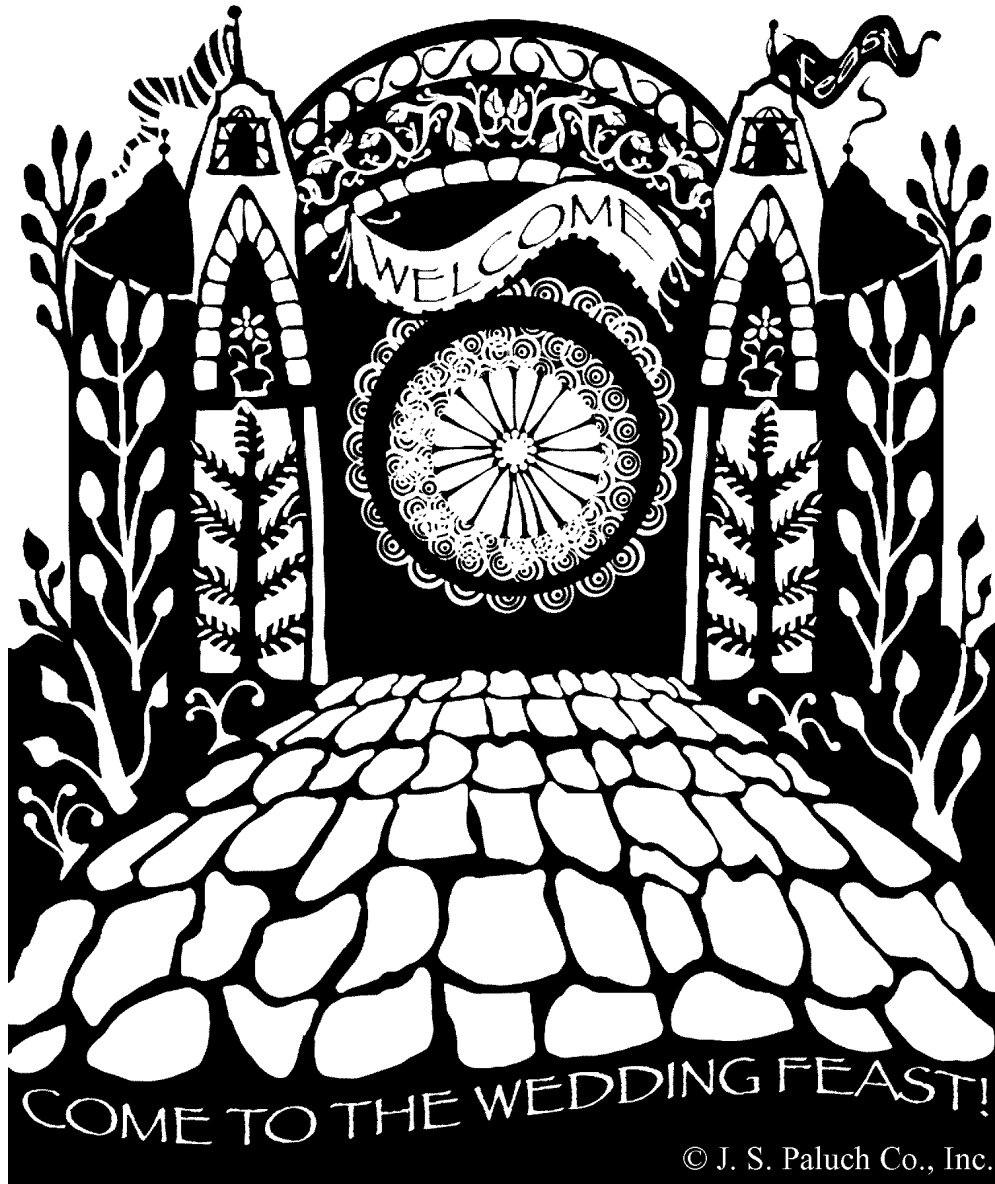


Twenty-eighth Sunday
in Ordinary Time,
Year A



October 11, 2020
Saint Mary's Basilica

Entrance Hymn

God bids us Welcome



God bids us wel - come to - his house, and he in -
- vites us to - his feast; Day of great joy and
ha - ppi - ness, al - le - lu - ia.

(Verses sung by Choir)

Great was my joy when I was told:
"Let us go forth to God's abode
there in the city of the Lord."

Speak, then, O Lord, our hearts renew.
You show the way, your word is true.
Bring life to us, make all things new.

Many are called to share the feast;
Summon the greatest and the least,
Christ is the Victim and the Priest.

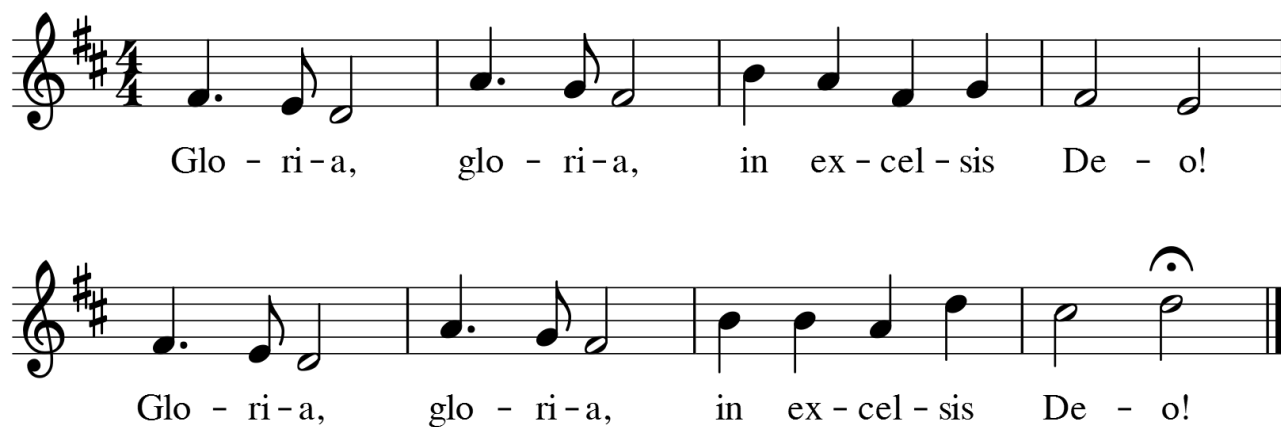
Kyrie Eleison



Musical notation for the Kyrie Eleison. It consists of four staves of music in G major (one sharp) and 7/8 time. The lyrics are: Ky-ri - e, * e - le - i - son. Chri - ste, e - le - i - son. Ky-ri - e, e - le - i - son. Ky-ri-e, * ** e - le-i-son.

Music: Vatican Edition VIII; acc. by Richard Proulx

Gloria



Musical notation for the Gloria. It consists of two staves of music in G major (one sharp) and 4/4 time. The lyrics are: Glo - ri - a, glo - ri - a, in ex - cel - sis De - o! Glo - ri - a, glo - ri - a, in ex - cel - sis De - o!

Responsorial Psalm

Psalm 23



R. I shall live in the house of the Lord all the days of my life.

Gospel Acclamation



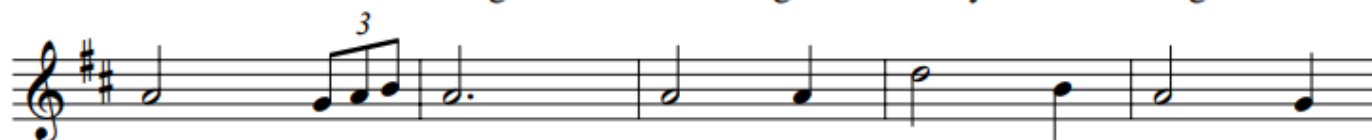
Al-le-lu - ia, al-le-lu - ia, - al-le-lu - ia.

Offertory Hymn

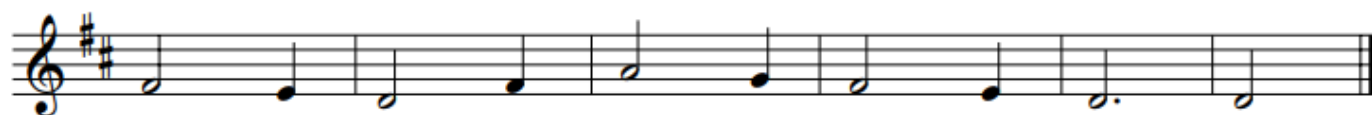
The King of Love My Shepherd Is



1. The King of love my shep - herd is, Whose good-ness
 2. Where streams of liv - ing wa - ter flow My ran-somed
 3. Con - fused and fool - ish oft I strayed, But yet in
 4. In death's dark vale I fear no ill With you, dear
 5. You spread a ta - ble in my sight; Your sav - ing
 6. And so through all the length of days Your good-ness

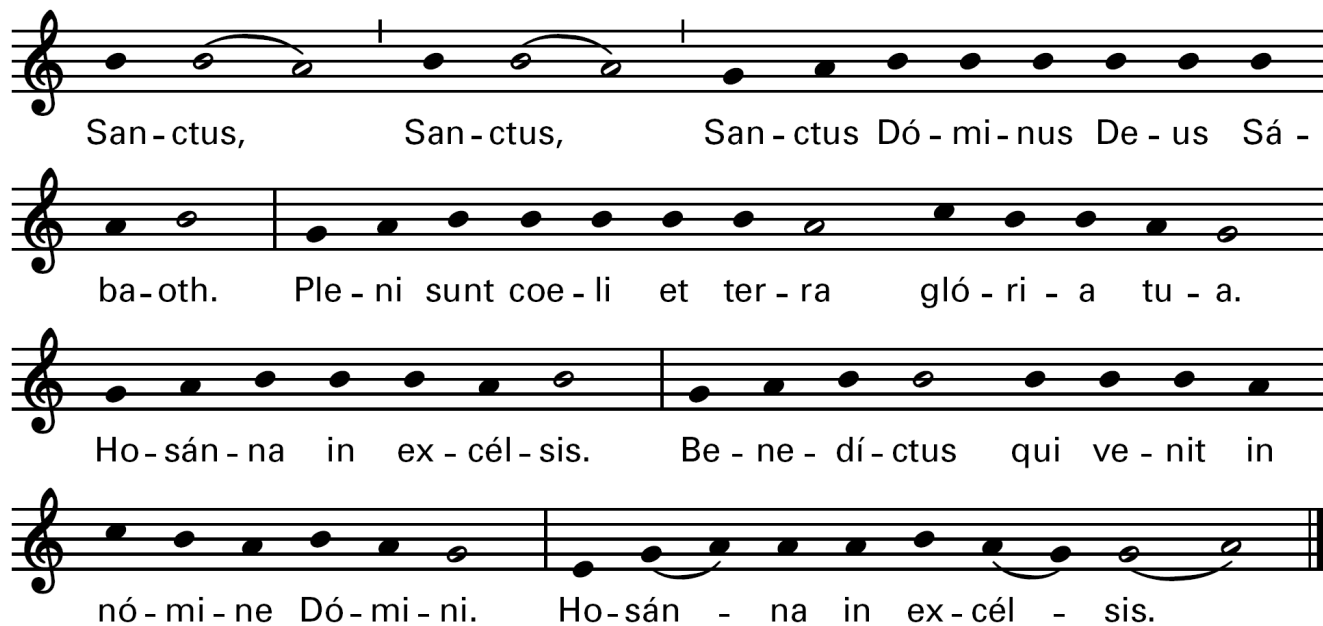


fails me nev - er; I noth - ing lack if
 soul he's lead - ing, And where the ver - dant
 love he sought me; And on his shoul - der
 Lord, be - side me, Your rod and staff my
 grace be - stow - ing; And O what trans - port
 fails me nev - er; Good Shep - herd, may I



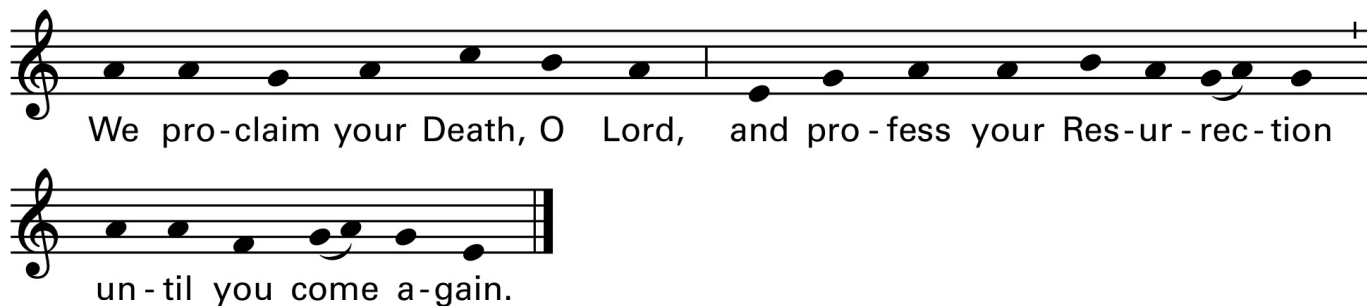
I am his, And he is mine for ev - er.
 pas - tures grow With food ce - les - tial feed - ing.
 gent - ly laid, And home, re - joic - ing, brought me.
 com - fort still, Your cross be - fore to guide me.
 of de - light From your pure chal - ice flow - ing!
 sing your praise With - in your house for ev - er.

Sanctus



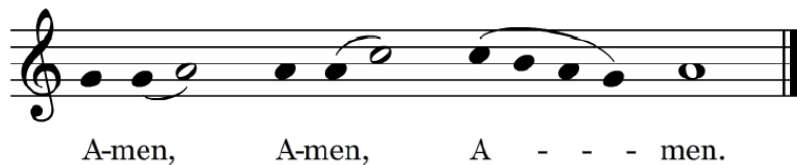
San-ctus, San-ctus, San-ctus Dó-mi-nus De-us Sá -
ba-oth. Ple-ni sunt coe-li et ter-ra gló-ri-a tu-a.
Ho-sán-na in ex-cél-sis. Be-ne-dí-ctus qui ve-nit in
nó-mi-ne Dó-mi-ni. Ho-sán - na in ex-cél - sis.

Mystery of Faith



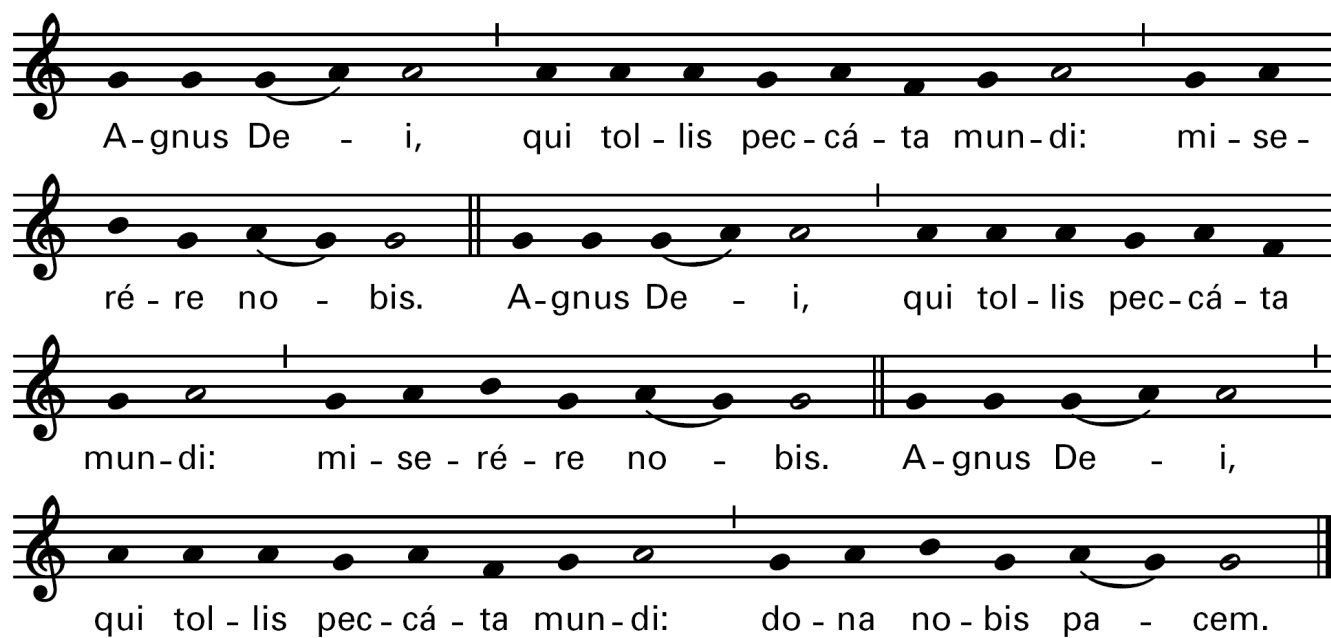
We pro-claim your Death, O Lord, and pro-fess your Res-ur-rec-tion
un-til you come a-gain.

Amen



A-men, A-men, A - - - men.

Agnus Dei



Agnus De - i, qui tol - lis pec - cá - ta mun - di: mi - se -
ré - re no - bis. A - gnus De - i, qui tol - lis pec - cá - ta
mun - di: mi - se - ré - re no - bis. A - gnus De - i,
qui tol - lis pec - cá - ta mun - di: do - na no - bis pa - cem.

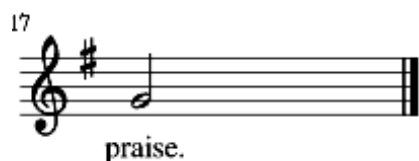
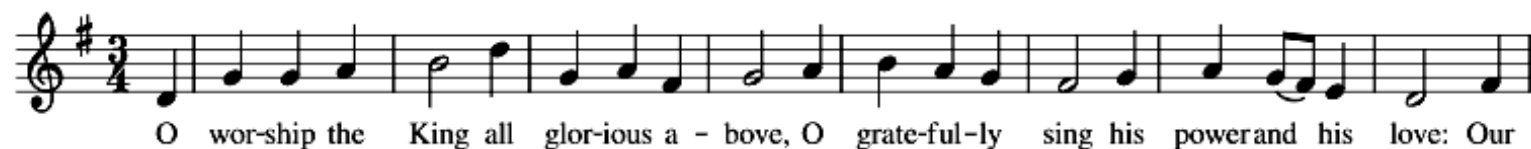


Post-Communion Hymn

O Worship the King all Glorious Above - HANOVER

Words: Robert Grant (1779-1838)

Tune: William Croft (1678-1727)



O tell of His might, O sing of His grace,
Whose robe is the light, whose canopy space,
His chariots of wrath the deep thunderclouds form,
And dark is His path on the wings of the storm.

The earth with its store of wonders untold,
Almighty, Thy power hath founded of old;
Established it fast by a changeless decree,
And round it hath cast, like a mantle, the sea.

Frail children of dust, and feeble as frail,
In Thee do we trust, nor find Thee to fail;
Thy mercies how tender, how firm to the end,
Our maker, defender, redeemer, and friend.

Recessional

Grosse Praeludium in D-Moll.....J. C. Kittel (1732-1809)



In agreement with copyright laws, any copyrighted music is reprinted with permission from Onelicense with License #A-623484 and CCLI with Streaming License #20516269